

# Doffa's Reindeer

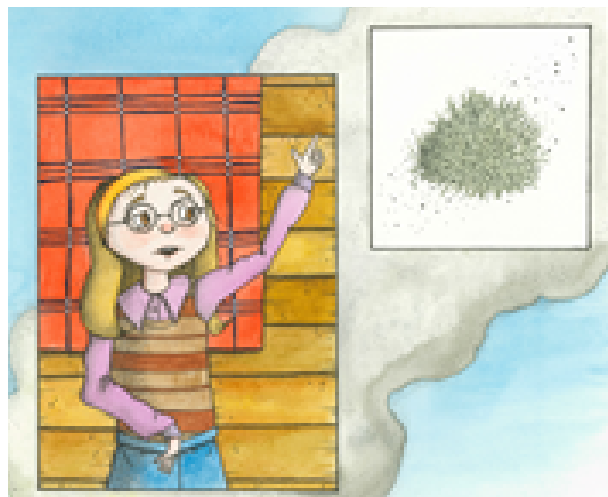
BY JULES POTTLE

ILLUSTRATED BY RUFUS THOMAS

STORY OVERVIEW

## Chapter overview

1. Introducing Ibba and her love for Doffa (her grandfather).
2. Ibba's love for Doffa and efforts to keeping him well as he grew a older.
3. Ibba takes over the herding and electricity becomes part of life in the town.
4. Doffa and Ibba are parted and the reindeer become impatient as they search for lichen.
5. Ibba moves the reindeer on in search of food.
6. Spring arrives and the town elders called a meeting of all the herders.
7. Mimmi explains her thoughts about why the lichen may not be growing as well.
8. Ibba and Aibmu find ways to keep their reindeer safe and well.



### Explore the illustrations

Give time to sit and look at the fabulous images drawn by Rufus Cooper specifically for this story. Encourage pupils to say what comes to their mind.

### Key science learning

recognising that environments can change and that this can sometimes pose dangers to living things



### Characters

Boazu - the reindeer  
Doffa - grandfather  
Enni - mother  
Ibba - granddaughter  
Aibmu - a reindeer herder  
Mimmi - the scientist



### Create a Story Map

Encourage the pupils to think about the key parts of the story. They could write or draw a story map of Doffa's Reindeer.

# Doffa's Reindeer

BY JULES POTTLE

ILLUSTRATED BY RUFUS THOMAS



# Doffa's Reindeer

STORY MAP

