

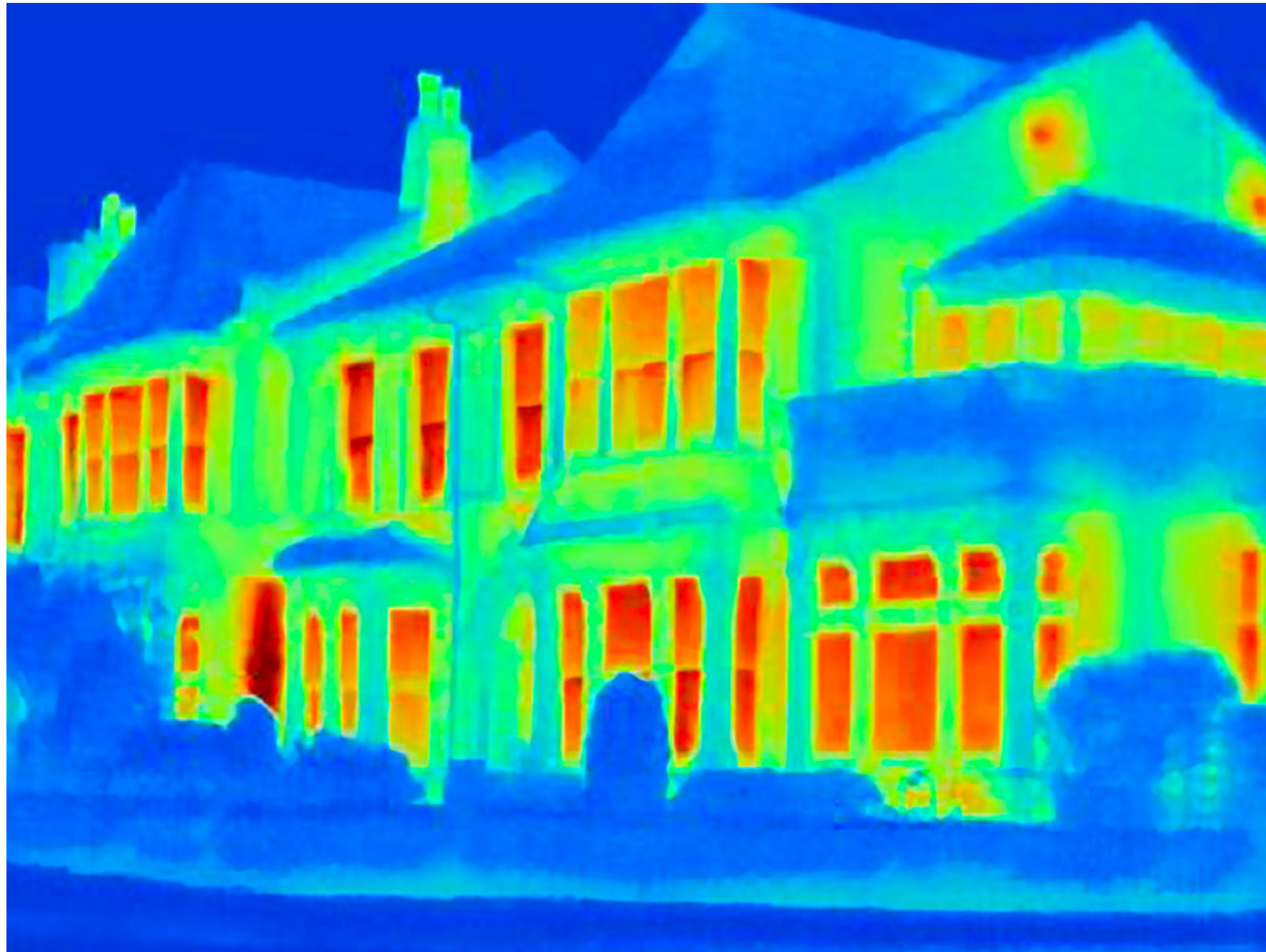
Great
Science
Share
for SCHOOLS

Great Glass Share 7-11 years



Odd one out





This is a **thermogram** of a house.

 Low temperature

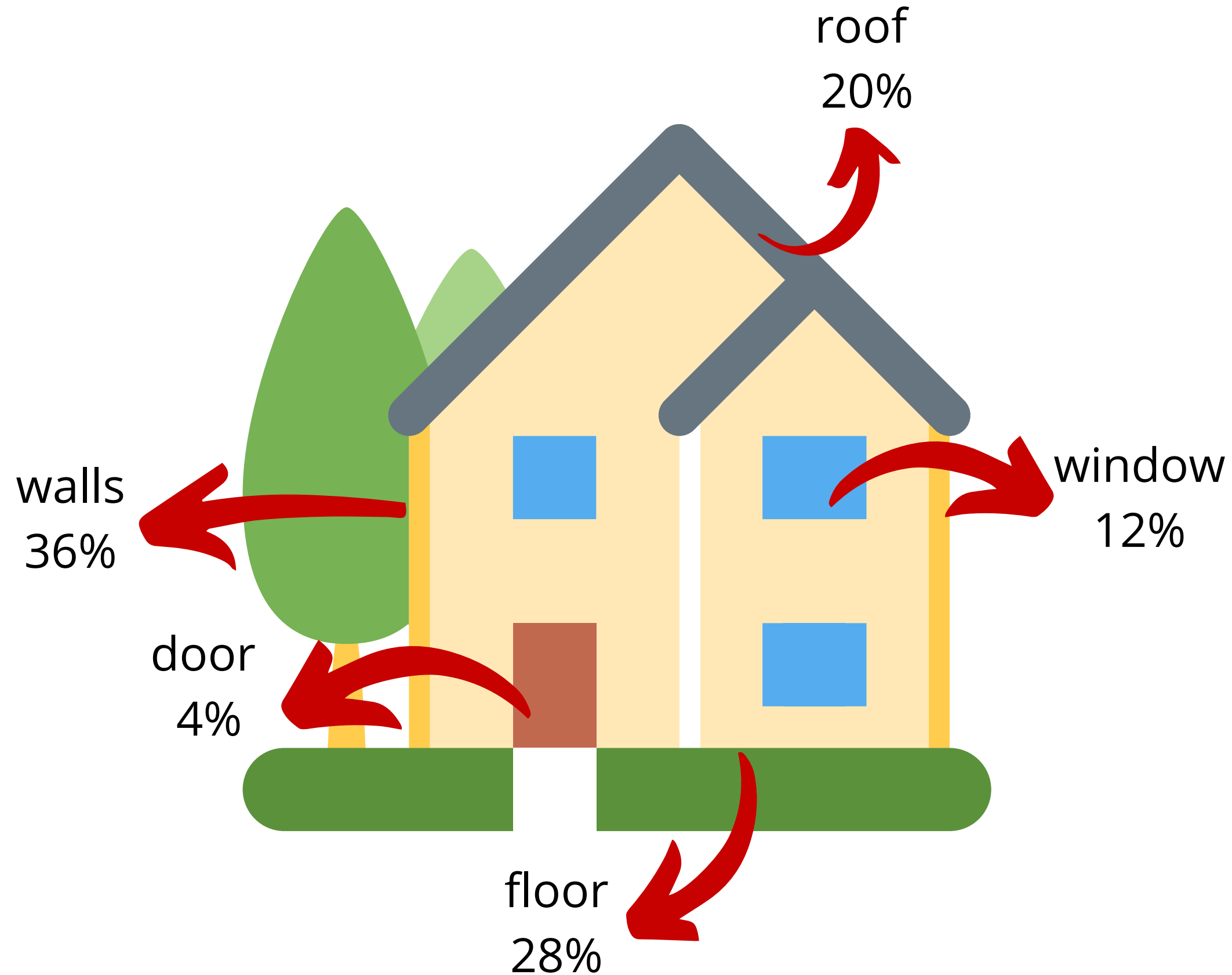
 High temperature

What does this tell you about the house?

What questions do you what to ask to find out more?



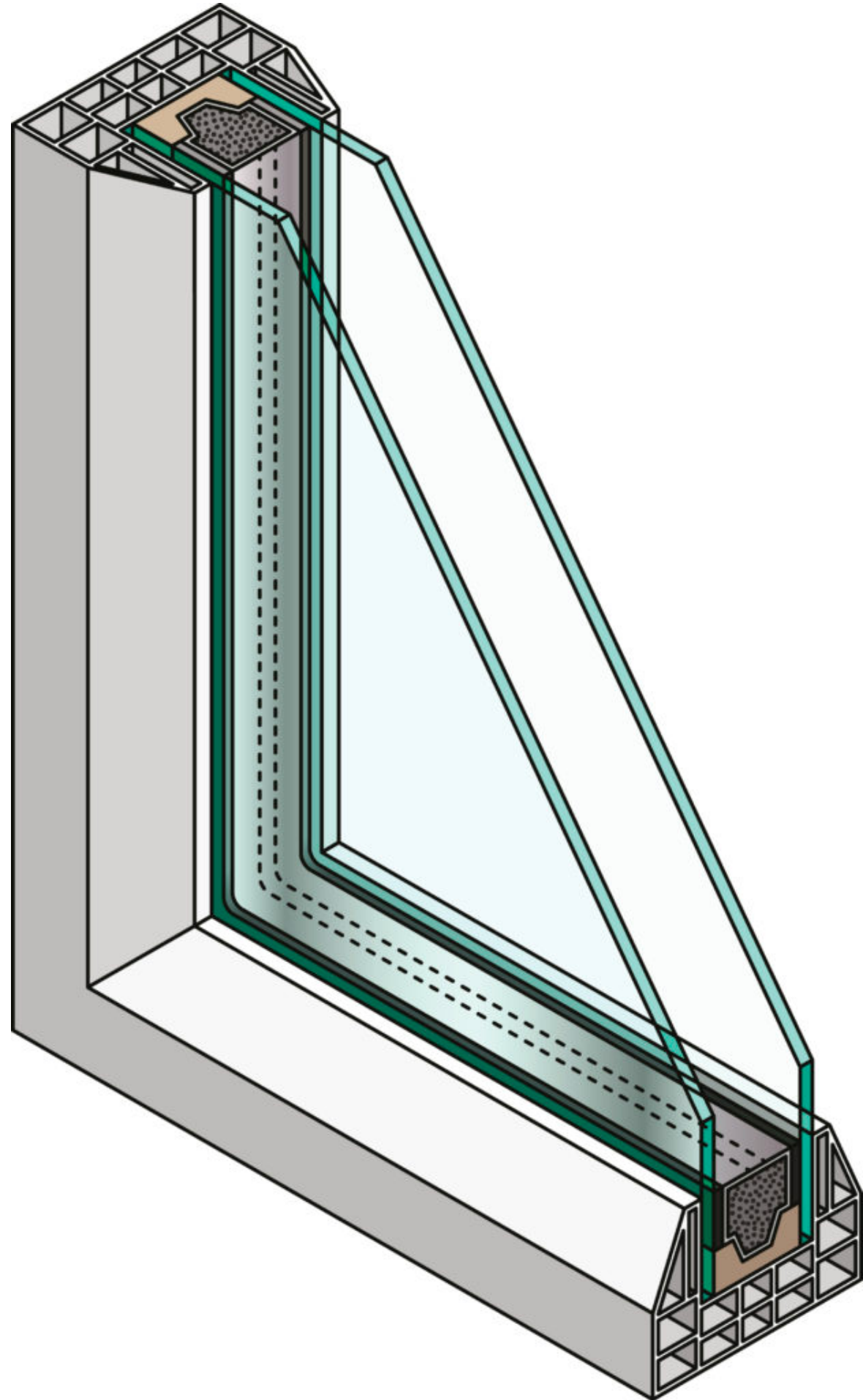
Heat loss



How many different ways can you think of reduce heat loss?



Questioning



What does '**double**' mean?

What do you notice about double glazing?



Questioning



"It's not wise to put very hot drinks in a cold glass!"

What's the link between this and why we have double glazing in houses?



Are double glazed windows more effective than single?



This is a **comparative test**. You are changing **one** thing whilst trying to keep everything else the same.

What are we changing?

What are we keeping the same?

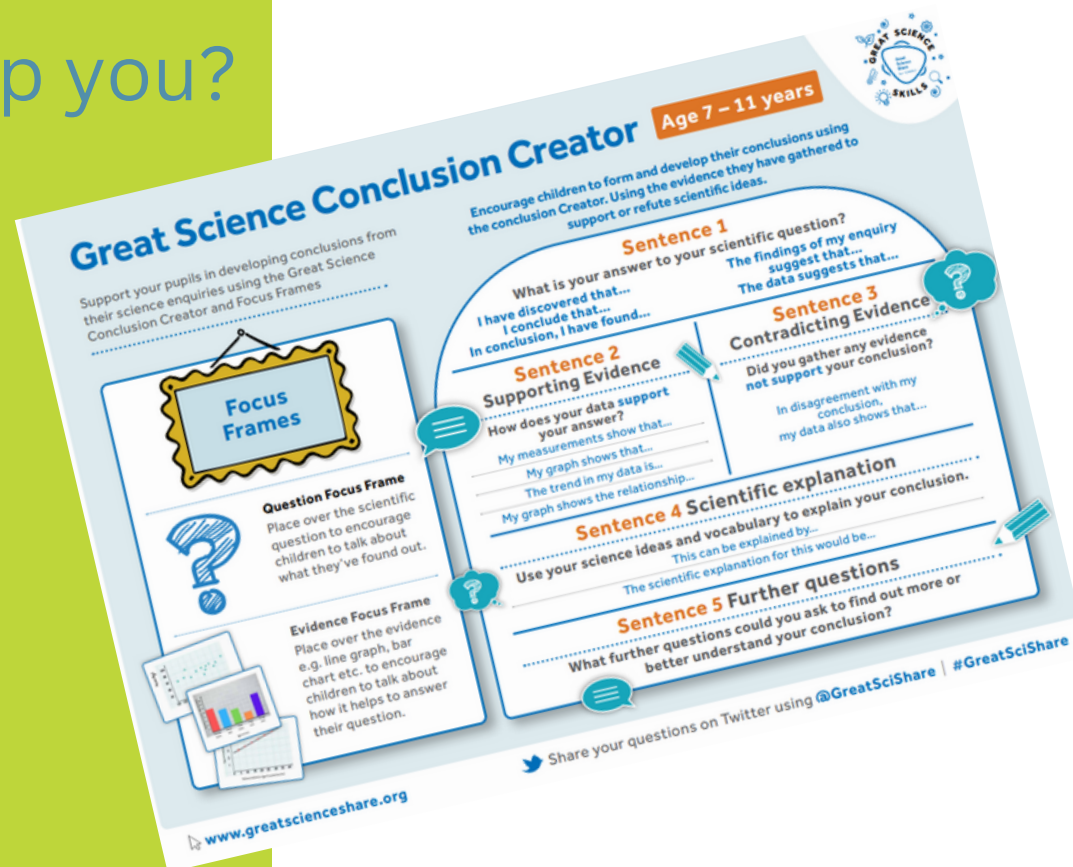
What are we measuring?



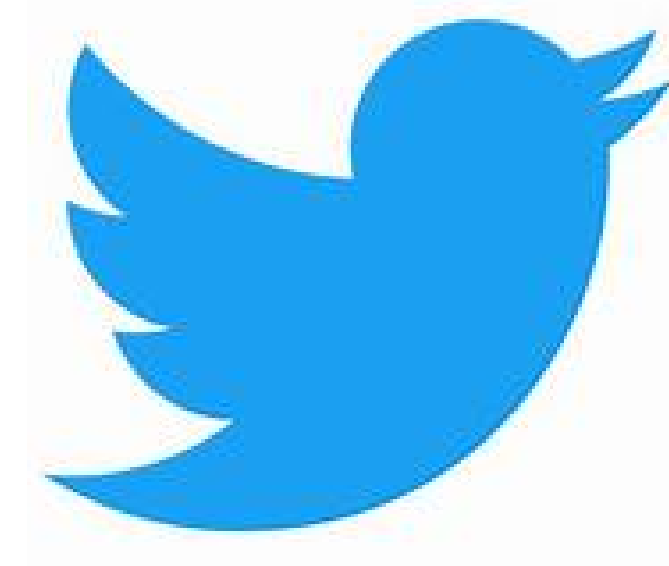
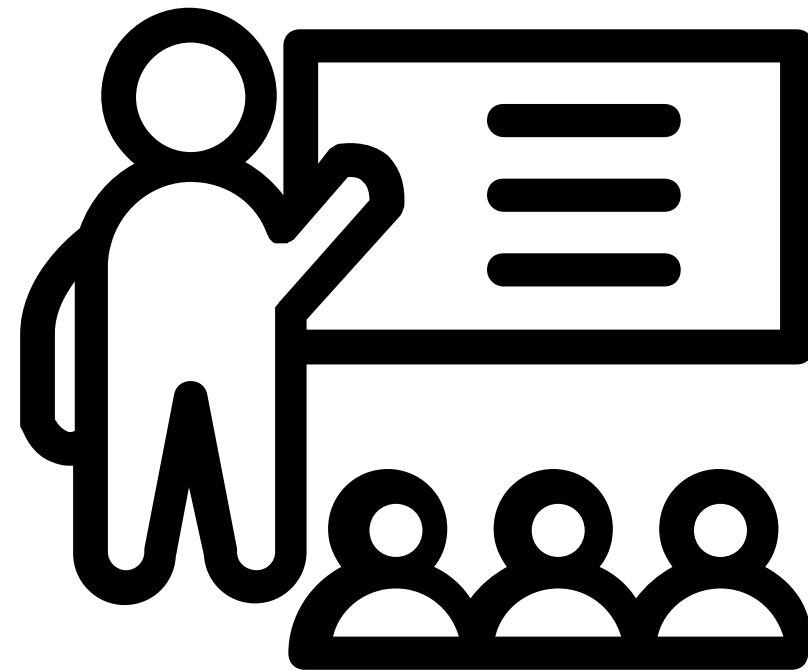
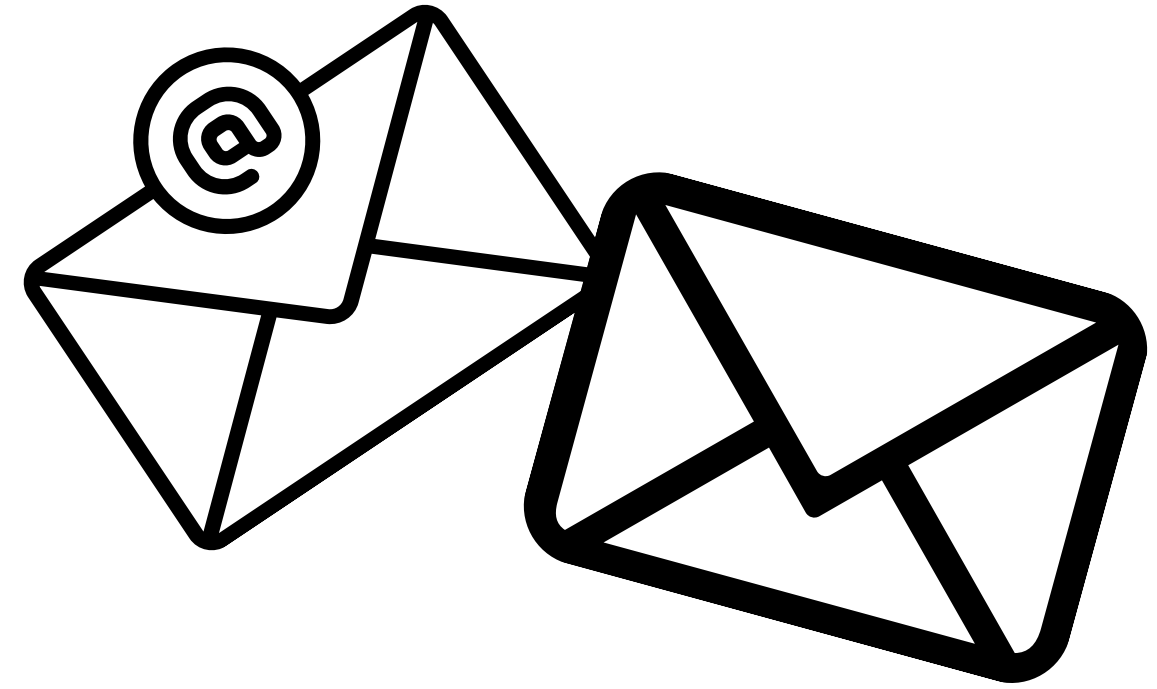
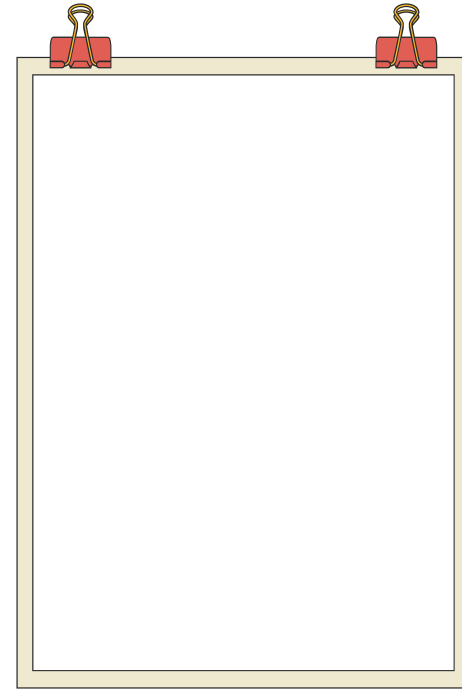
We are ready to draw our conclusions

Are double glazed windows more effective than single?

Can the Conclusion Creator help you?

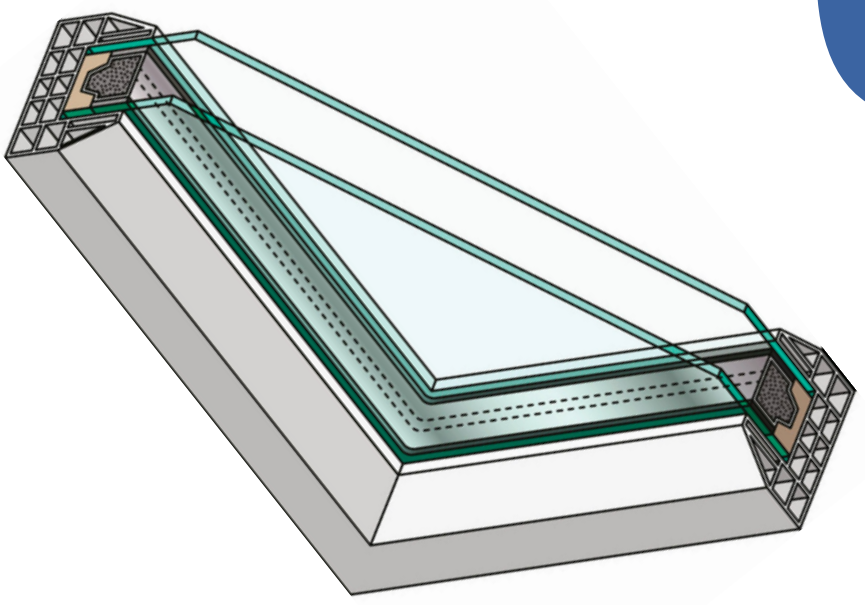
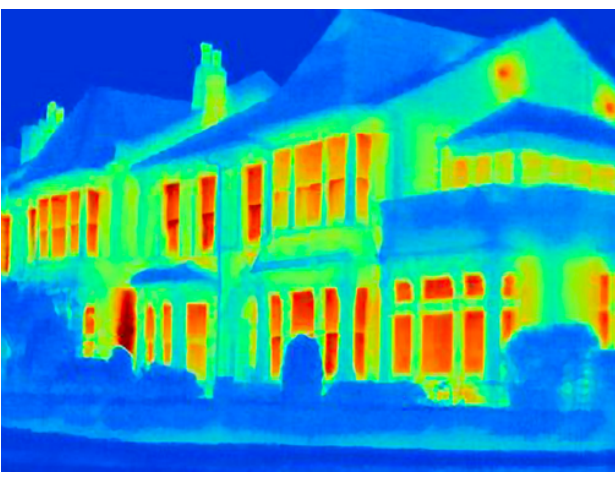


We have found out that...
We think this because we observed...
Our results show this because...





Questioning



Glossary

Conductor

a material which allows heat to pass through them easily

Transparent

materials are those that let light through with very little or no diffusing or scattering of the light. This means that you can see clearly through a transparent material

Reliable

able to be trusted

Insulator

a material which does not allow heat to pass through very easily

Comparative test

You are changing one thing whilst trying to keep everything else the same

Variable

what can be controlled or changed

With special thanks to PSTT and the Worshipful Worshipful Society of Glass Sellers.



DISCLAIMER: This activity sheet was written for The Great Science Share for Schools. The author(s) and the Great Science Share for Schools are not liable for the actions or activity of any persons who use this resource or in any of the suggested further resources. We assume no liability with regard to injuries or damage to property that may occur as a result of using this information. These activities are designed to be carried out by pupils working with an adult. The adult is fully responsible for ensuring the activity is carried out safely. You can access further Health & Safety guidance from CLEAPSS www.cleapss.org.uk. and SSERC www.sserc.org.uk (c) Copyright 2023 The University of Manchester